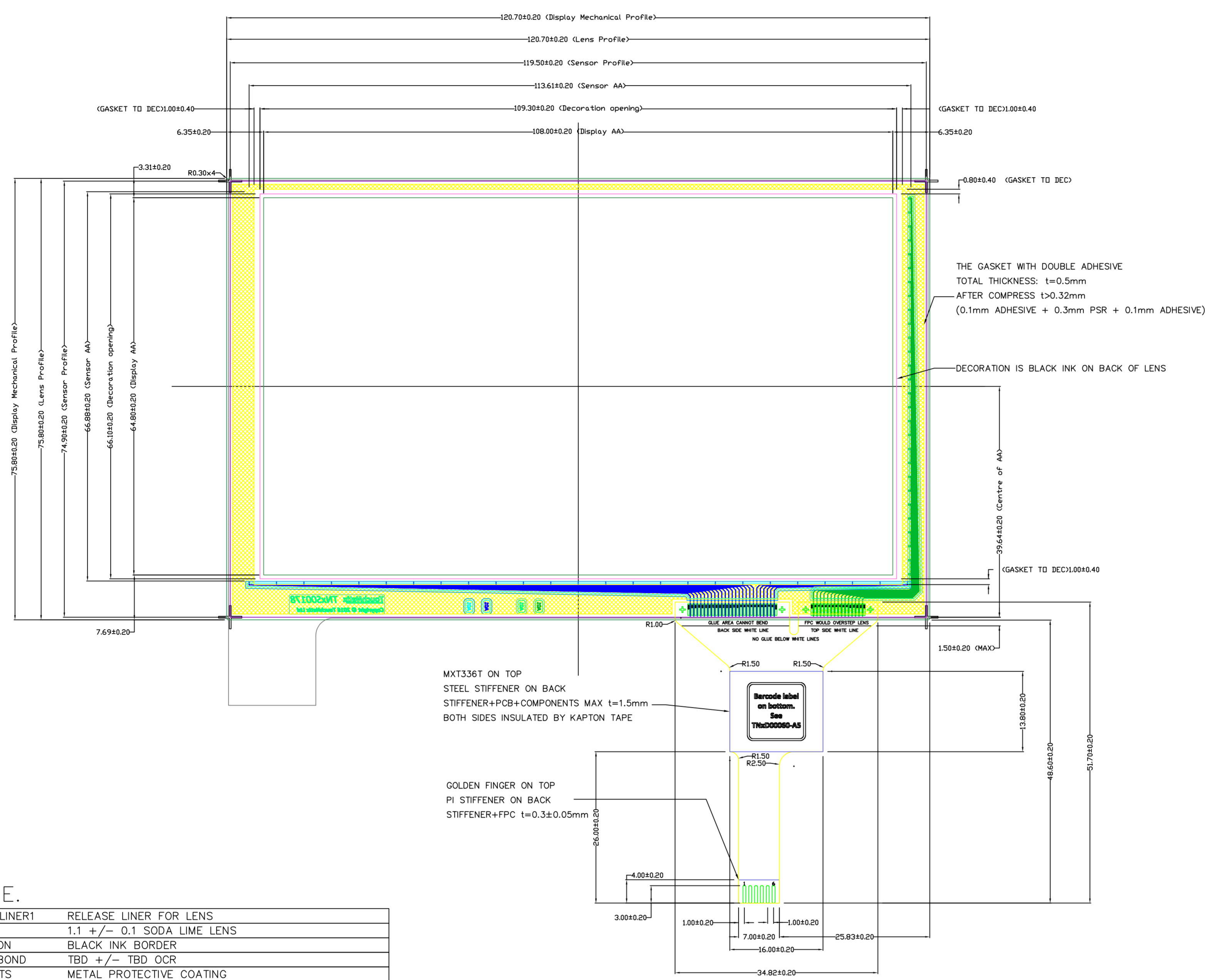


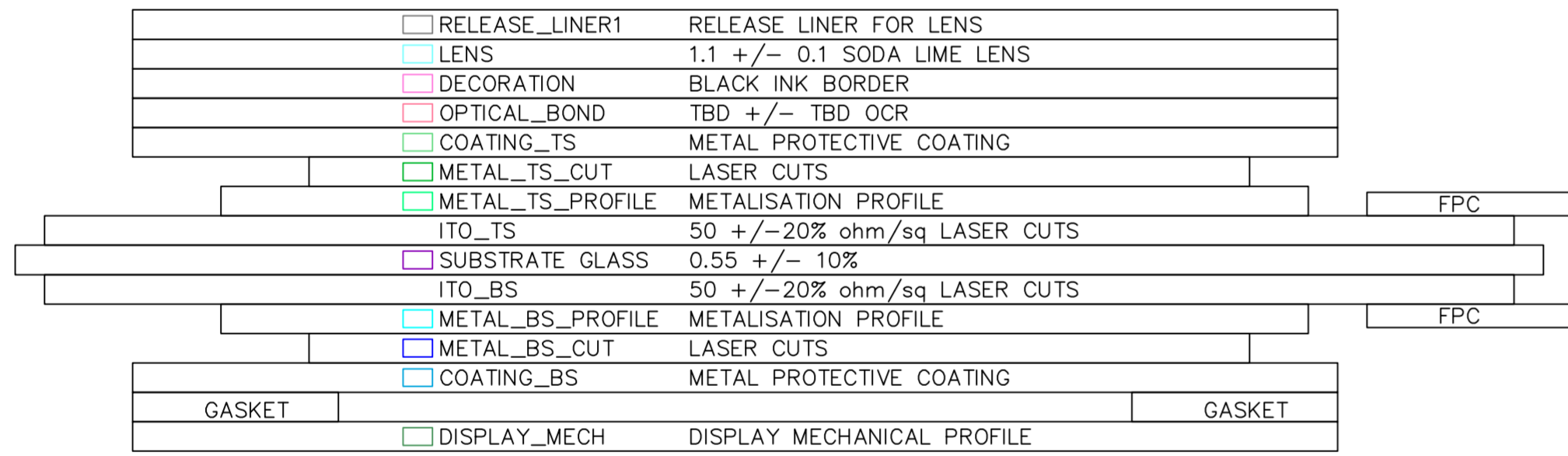
VIEW FROM FRONT (TOUCH) SIDE.



I/O Voltage = 3.3V

NO.	PIN OUT
1	GND
2	CHG INT
3	RESET
4	VDD
5	SCL
6	SDA

TOUCH-SIDE.



NOTE  
\* CHEMICALLY STRENGTHENED  
SODA LIME GLASS

A1: 1 DEC 2016 : Initial release.

PROJECT NAME: Boreas  
PROJECT NUMBER: P00289  
DRAWING NUMBER: TNxA00239-A1  
REVISION DATE: 1 DEC 2016  
DRAWING DESCRIPTION: Sensor and FPC Assembly  
DESIGNED BY: SC  
CHECKED BY: SWR 5/12/2016  
COPYRIGHT (c) TOUCHNETIX 2016

TouchNetix