

Model : SCT036TS

Characteristic:

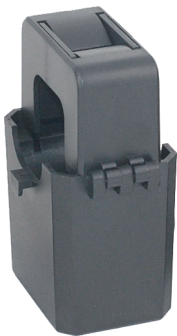
Compatible to foreign products completely, built-in TVS.
Purpose: Applicable for the current measuring monitoring and protection of AC motor, lighting equipment and air compressor.

Technical indicators:

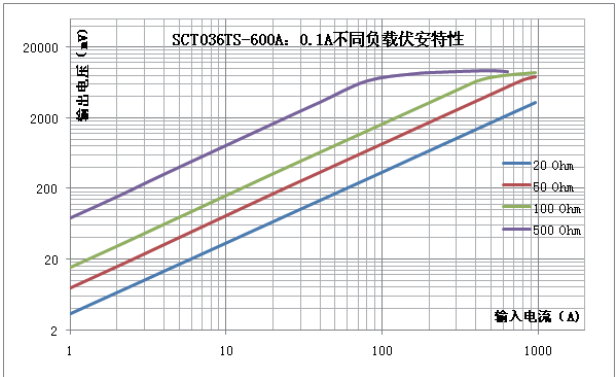
Hanging installation, Crimping terminal output
Material of core: Silicon steel sheet
Fire resistance property: UL94-V0
Work voltage:660V
Work temperature:-25℃～+60℃
Storage temperature:-30℃～+90℃
Frequency range:50Hz～60Hz
Dielectric strength:3.5KV 50Hz 1min

Electric parameter:

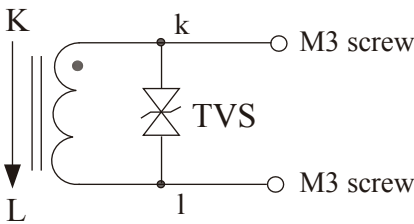
Rated input(rms)	600	A
Max. Input	650	A
Rated output	100	mA
Turns ratio	1: 6000	
Accuracy	0.5/1	%
Linearity	≤0.2	%
Phase error	+0.5±0.5°	
max:Sampling resistance	5	Ω
Weight	310	g



Characteristic curve in different load volt-ampere:

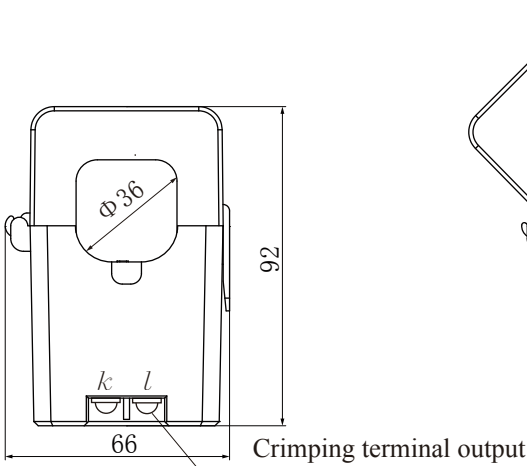


Wiring diagram:

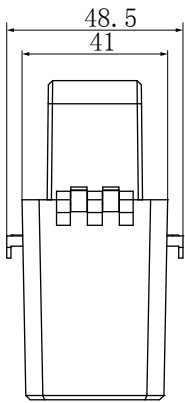
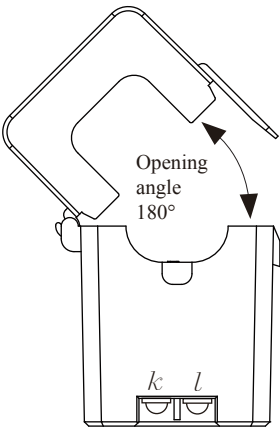


Outline size diagram(in mm):

TVS: Transient voltage suppressor,Current output type



Front view



Side view